

# Monday

## Agenda

- Bell Work
- Background Info
- Read “Red Fox Fur Coat” by Teolinda Gersão
- Analysis
- Exit Ticket

## Attendance Question

What was your favorite toy as a kid?



## Due Dates

- 1.6 Questions - DUE NOW
- Bell Work- Friday

## Objectives

- Use telling details to make inferences about the emotional state of a story's main character. 9-10.RL.KID.1
- Analyze how a story's theme is developed through characterization. 9-10.RL.CS.4
- Discuss how specific word choices impact the meaning and tone of a text. 9-10.RL.CS.

## Materials

- Bell Work
- Pencil
- Text Book
- Notes



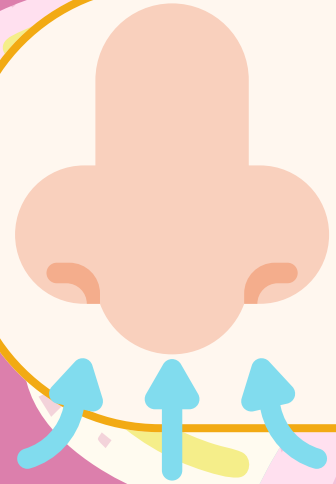
# Bell Work

For each of the following emotions, describe what it looks like on someone else, and what it feels like to experience them.

- **Awe- A respectable mix of fear and wonder.**
- **Anxiety**
- **Calm**
- **Fear**
- **Impatient**



# Sensory Details



Sour Sweet  
rotten Scent  
stinky natural



Sour  
disgusting  
delicious  
fruity



Wet  
Sticky Soft  
Fluffy



Droopy  
Crusty  
Beautiful  
Blue



Scrapping  
Yelling  
Ocean  
music



# Emotion Details



**Emotion details outline the psychological, behavioral, or expressive response a character has to the environmental factors around them.**



**Teolinda Gersao**

*Page*  
**40**

# Annotate As We Read

**Questions**

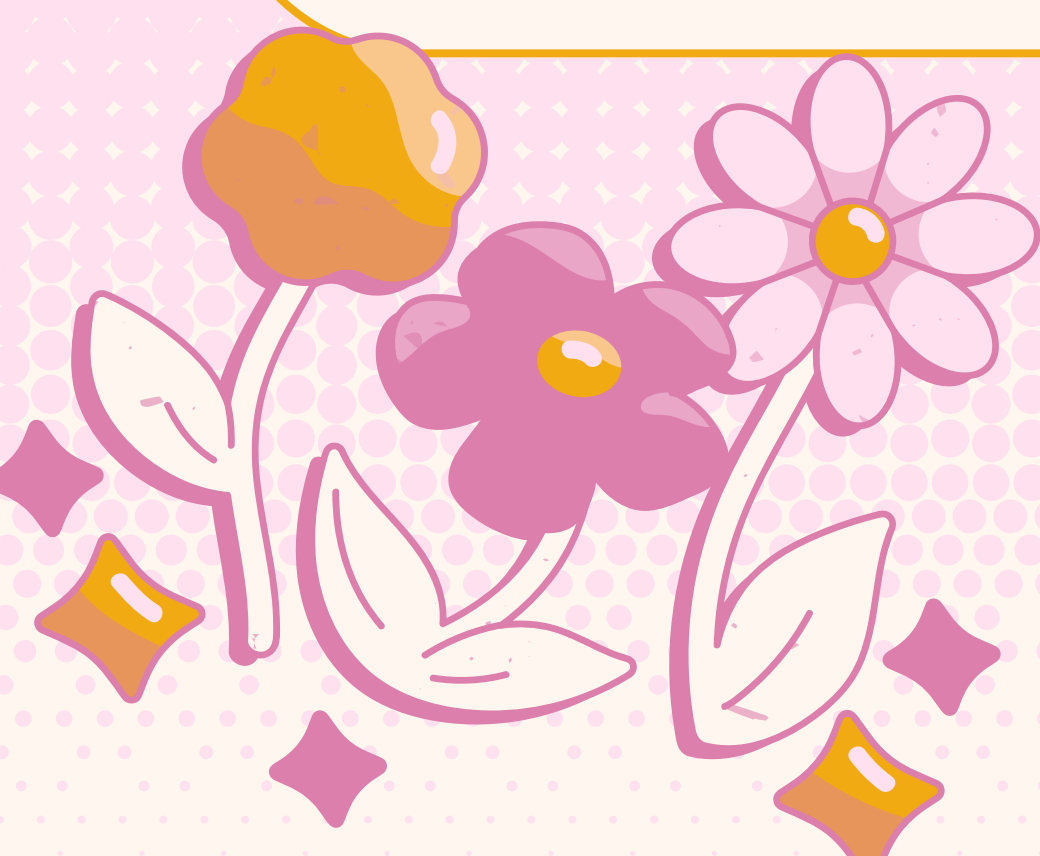
**Connections**

**Interpretations**

**Words**

**Patterns**

**Summarize**



# Exit Ticket

Use R.A.C.E. format to explain the **emotional changes** of the bank clerk from the beginning of “Red Fox Fur Coat” to the end.



# Tuesday

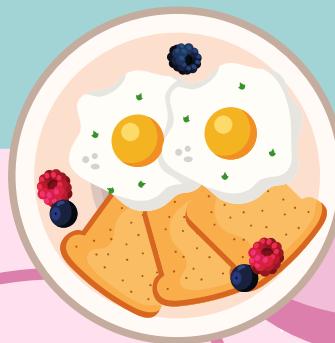
## Agenda

- Bell Work
- Notes
- Individual Work
- Group Work
- Exit Ticket

## Attendance

### Question

Do you prefer  
breakfast food or  
dinner food?



## Due Dates


- 1.6 TDQs -  
Tomorrow BOC
- Bell Work- Due  
Friday

## Objectives

- Use telling details to make inferences about the emotional state of a story's main character. 9-10.RL.KID.1
- Analyze how a story's theme is developed through characterization. 9-10.RL.CS.4
- Discuss how specific word choices impact the meaning and tone of a text. 9-10.RL.CS.

## Materials

- Bell Work
- Pencil
- Notes
- Text Book



# Bell Work

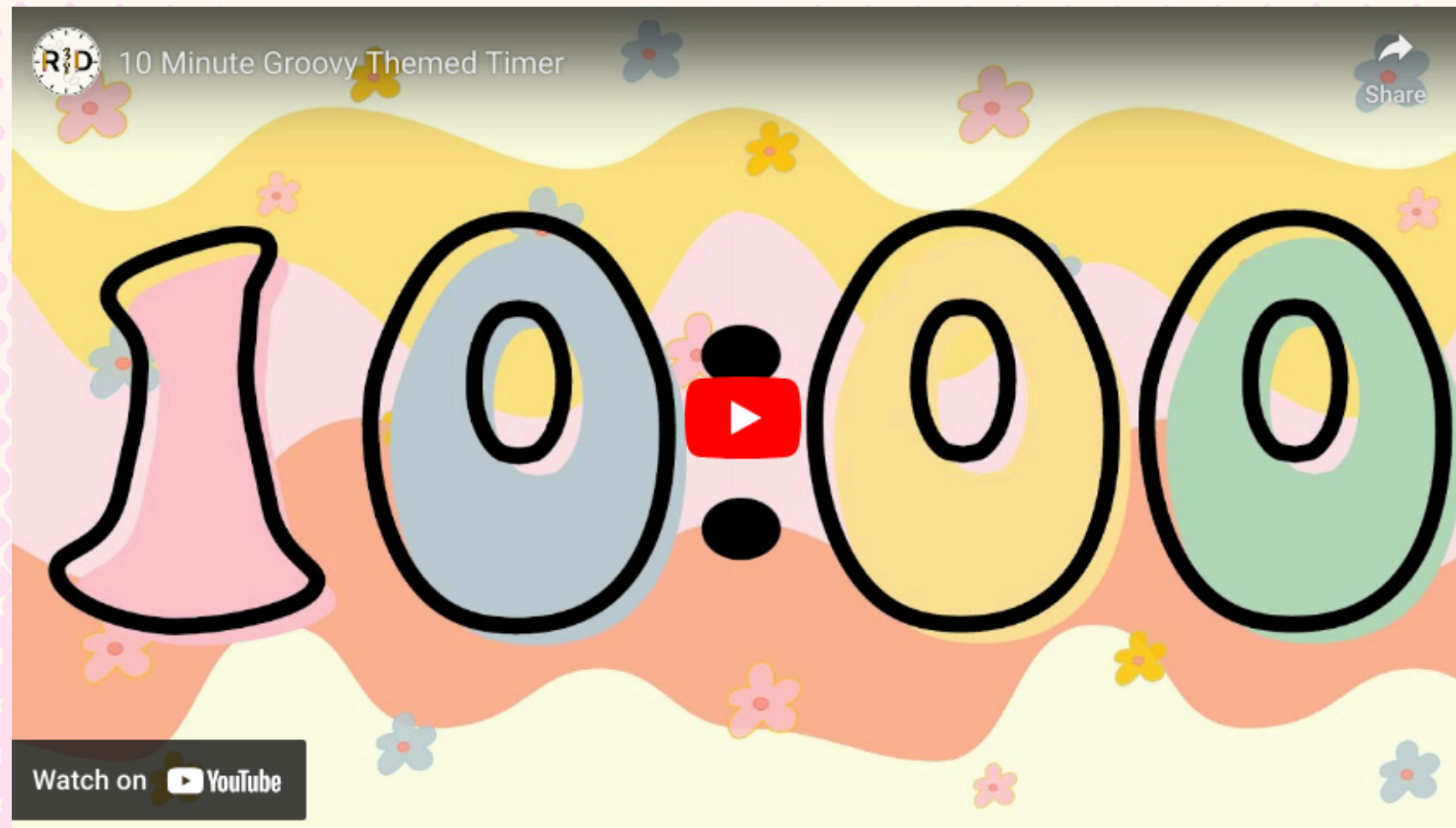
Answer the following questions in 3-5 complete sentences and provide text evidence.

- Based on your knowledge of "Social Norms", what behavior would have been appropriate for the bank teller to display while attending the party?
- What did she do instead?
- How do you think the other party goers reacted?



# Finish Reading and Answer

**What is the theme of the story?**



# Characterization

## Direct Characterization

Describing characters outright by directly identifying their physical traits, personality, thoughts, and actions.

Ex: Sam is a fun loving boy.

Sam wears yellow.

Sam has short brown hair.



# Characterization

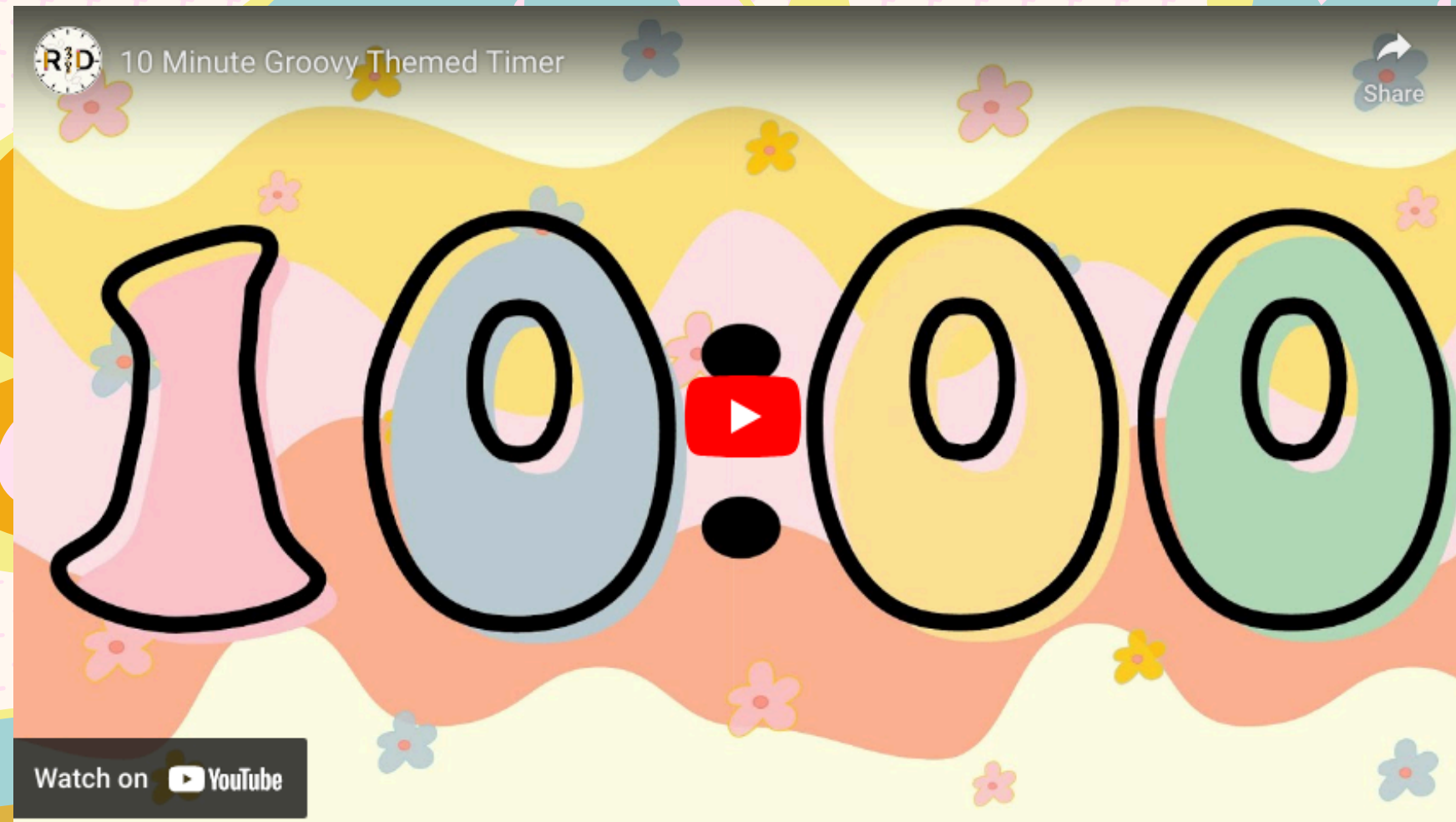
## Indirect Characterization

a type of literary device that reveals details about a character without stating them explicitly. Instead of describing a character in a straightforward way, the author shows their traits through that character's actions, speech, thoughts, appearance, and how other characters react to them

Ex: “Thank you,” she smiled to the waitress.  
She then wrote 50% on the tip line of her check.

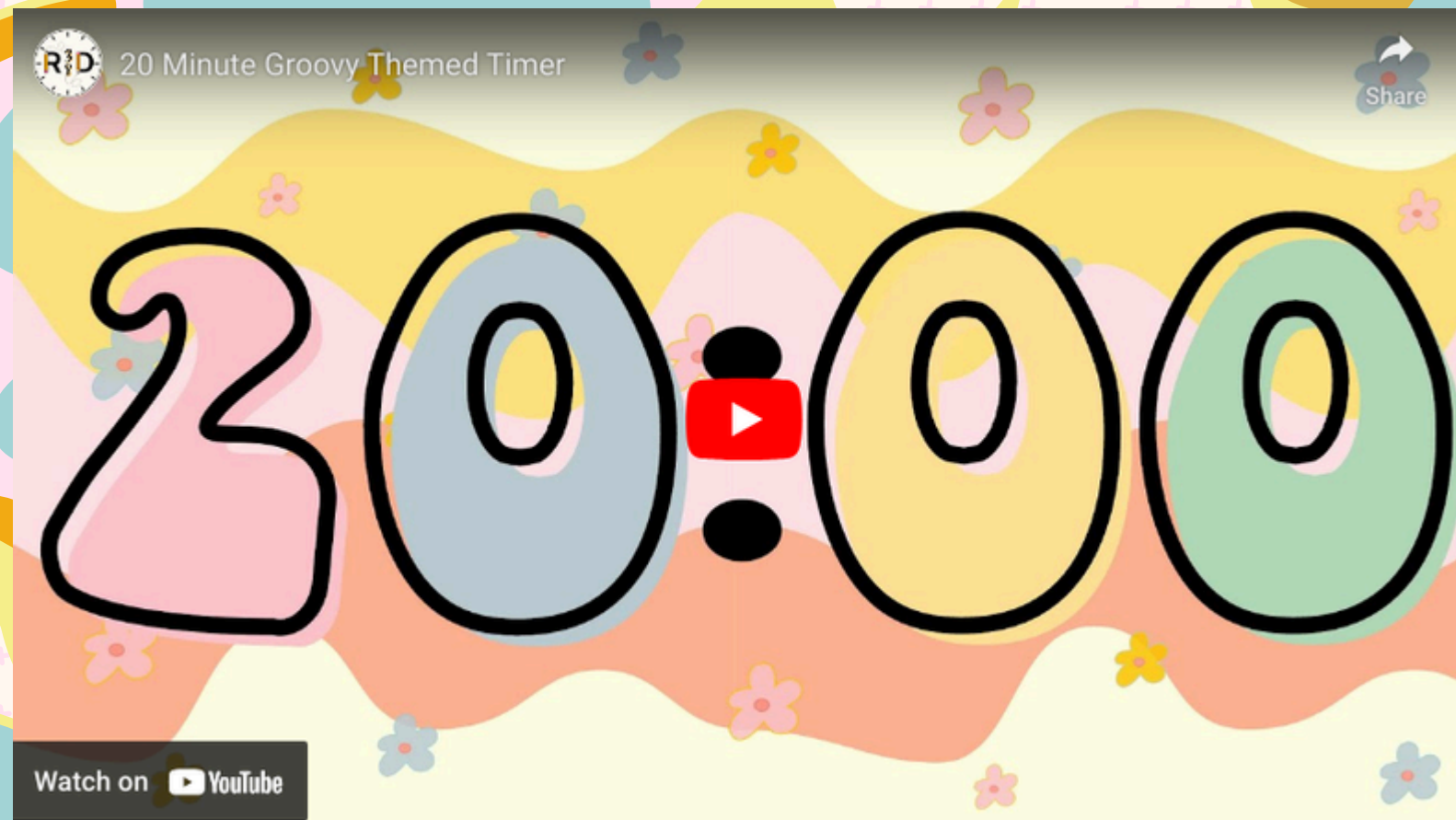


# 1.7 wqa



1. Answer Question 1 alone - 10 minutes
2. Skip # 3 & 4
3. With a partner answer 5 a-d.- 20 minutes
4. Go back to your seat for instructions on #6.

# 1.7 mma



1. Answer Question 1 alone - 10 minutes
2. Skip # 3 & 4
3. With a partner answer 5 a-d.- 20 minutes
4. Go back to your seat for instructions on #6.

# Exit Ticket

Read the excerpt from the short story "The Red Fox Fur Coat."

It would be admired, as would she, people would turn to stare after her, but it was not this that provoked a secret smile; rather, she realized, it was an inner satisfaction, an obscure certainty, a sense of being in harmony with herself, that spilled over in all kinds of small ways. It was as if the rhythm of her breathing had changed, had grown calmer and deeper. She realized too, perhaps because she no longer felt tired, that she moved more quickly, that she could walk effortlessly now, at twice her usual speed. Her legs were agile, her feet nimble. Everything about her was lighter, quicker; her back, shoulders, and limbs all moved more easily.

1. What inference can be drawn about the bank clerk's emotional state in this excerpt?

- A. The bank clerk is vain and most pleased that others will notice and appreciate the changes she is experiencing.
- B. The bank clerk is happy with the change she is experiencing because it is bringing her closer to her true self.
- C. The bank clerk is secretive and worried about keeping her changes from others who might stare at her.
- D. The bank clerk is relieved to feel better physically so that she can be more active and energetic in her daily life.

2. What is the significance of the salesperson repeating "It could have been made for you" to describe how the fur coat fits the bank clerk in "The Red Fox Fur Coat"?

- A. The repetition by the salesperson helps the bank clerk justify the large sum of money she has to spend to buy the coat.
- B. The repetition helps foreshadow the changes the bank clerk experiences after buying the coat.
- C. The repetition distracts attention from the physical changes the bank clerk experiences.
- D. The repetition shows that the salesperson is only concerned about making the sale to the bank clerk.

# Wednesday

## Agenda

- Bell Work
- Dialog Lesson
- Timed Narrative Writing Prompt

## Attendance

### Question

What time do you wake up when you are sleeping in?



## Due Dates

- 1.6 TDQs- DUE NOW
- Bell Work- Due Friday

## Objectives

- Use telling details to make inferences about the emotional state of a story's main character. 9-10.RL.KID.1
- Analyze how a story's theme is developed through characterization. 9-10.RL.CS.4
- Discuss how specific word choices impact the meaning and tone of a text. 9-10.RL.CS.

## Materials

- Bell Work
- Pencil
- Text Book
- Notes

# Wednesday

## Agenda

- Bell Work
- #6 Example
- Finish 1.7 TDQs
- Dialog Lesson and Practice

## Attendance

### Question

What time do you wake up when you are sleeping in?



## Due Dates

- 1.6 TDQs- Due Tomorrow
- Bell Work- Due Friday

## Objectives

- Use telling details to make inferences about the emotional state of a story's main character. 9-10.RL.KID.1
- Analyze how a story's theme is developed through characterization. 9-10.RL.CS.4
- Discuss how specific word choices impact the meaning and tone of a text. 9-10.RL.CS.

## Materials

- Bell Work
- Pencil
- Text Book
- Notes



# Bell Work

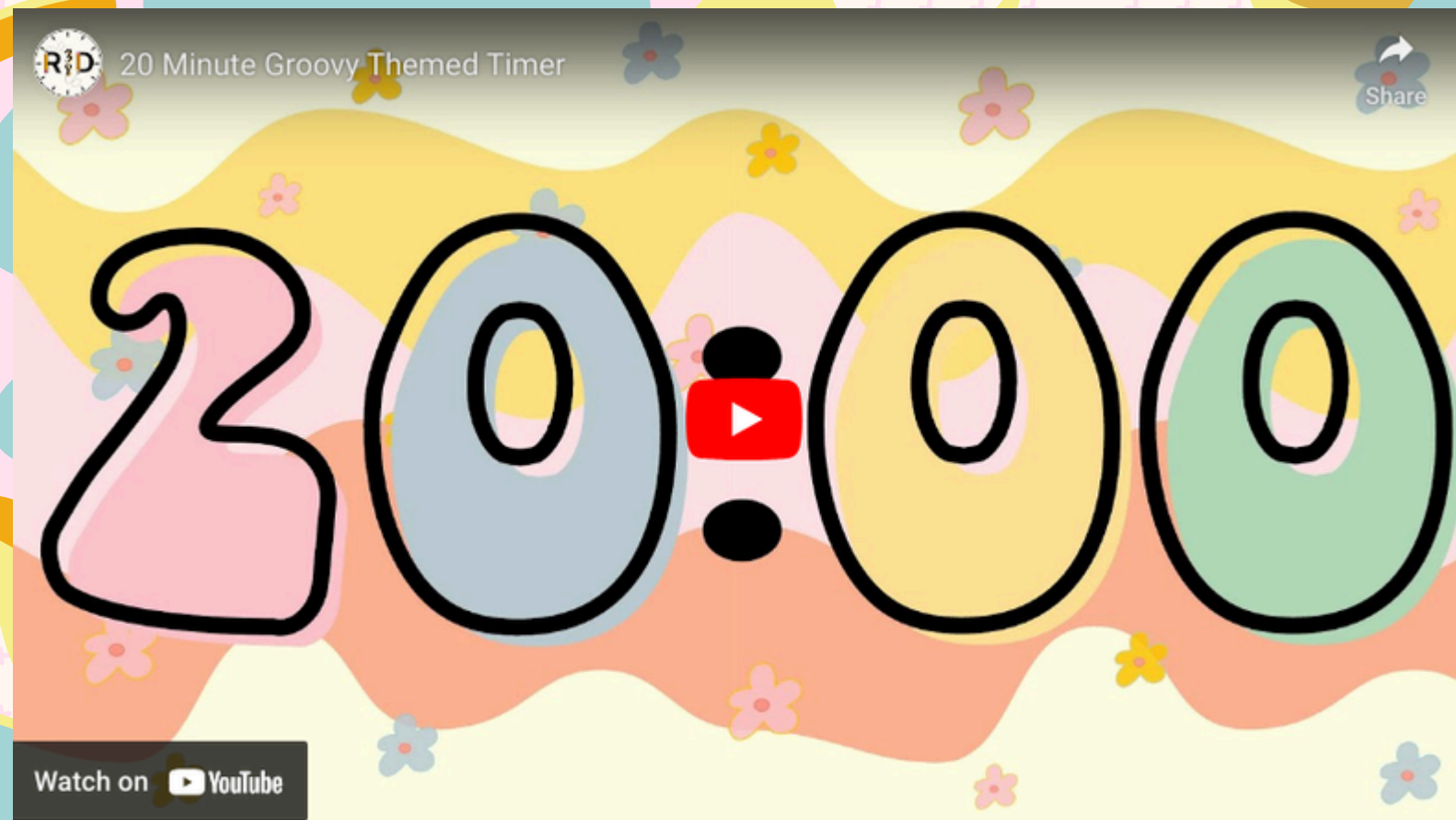
Answer the following question in full sentences.

**Why does the author choose to use the word “insistently” in the following sentence?**

**“She poured over the bodies of birds, fascinated, pondering the softness of the flesh behind their feathers; and a single word kept bobbing insistently about in her mind: predator.”**



# 1.7 mma



1. Answer Question 1 alone - 10 minutes
2. Skip # 3 & 4
3. With a partner answer 5 a-d.- 20 minutes
4. Go back to your seat for instructions on #6.

# Dialog Rules

**1. Each new speaker needs a new indented line.**

**2. Said is DEAD. Use another term that is more expressive.**



**3. All punctuation needs to go inside the quotation marks.**

# Thursday

## Agenda

- Bell Work
- Dialog Notes
- Writing Prompt

## Attendance

### Question

Do you prefer to “get it done” or wait until the last minunte



## Due Dates

- 1.6 TDQs- DUE NOW
- Bell Work- Due Friday

## Objectives

- Use telling details to make inferences about the emotional state of a story's main character. 9-10.RL.KID.1
- Analyze how a story's theme is developed through characterization. 9-10.RL.CS.4
- Discuss how specific word choices impact the meaning and tone of a text. 9-10.RL.CS.

## Materials

- Bell Work
- Pencil
- Pieces of Paper



# Bell Work

Write a sentence for each of the following punctuation styles using the style.

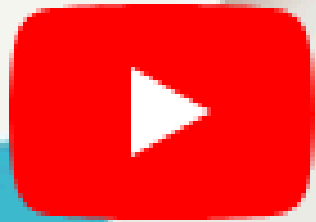
1. Colons in a list.
2. Semicolons
3. Compound
4. Complex sentence
5. Compound complex sentence





How

to



Dialogue

Format

# Writing Prompt

- **Individually**. Write three original paragraphs about what would happen if the bank teller went to the doctor and reported her symptoms. Use telling details to capture the essence of her problem as she relays them to the dr.
- 
- **Remember: To the Same POV.**
- **Dialog Grammar Rules.**
- **Use telling details**
- **Due at the end of class!**



# Peer Grade



1. Trade papers with a partner.
2. Read their papers.
3. Use the rubric to grade their paper.  
(be honest, its how we grow).

x2

# Period 1

**Code:**

# Period 4

**Code:**

# Period 5

**Code:**

# Exit Ticket

**Based on what you read from your peers today, what is the most common issue in writing a narrative? How can you use this knowledge to improve your own writing?**



## Agenda

- Bell Work
- Quiz
- Characterization Activity

## Attendance

### Question

What do you plan to do over break?



## Due Dates

Bell Work - Due Today

## Objectives

- Analyze how a story's theme is developed through characterization. 9-10.RL.CS.4

## Materials

- Bell Work
- Pencil

# Bell Work

**Based on your experience  
yesterday, what is your biggest  
hold back when writing a  
narrative?**

**Write 2-3 Sentences.**

